



# Symantec™ Discovery and Automation. Certificate control, insight and automation. Uninterrupted business.

## **(Re)gain control of your SSL/TLS environment**

Discovery and Automation is a service enabling the detection, monitoring and automated renewal of certificates installed across an entire environment regardless of their issuing Certification Authority. Our service uses an advanced hybrid deployment model to give you complete, integrated control over your SSL/TLS certificates.

Discovery and Automation will help you:

-  • Get a comprehensive view of the certificates in our networks
-  • Avoid unplanned outages due to certificate expiration
- Ensure smooth, automated certificate renewals
- Respond fast to vulnerabilities and security issues

## **Visibility, agility, security**

Symantec Discovery and Automation is designed as a cloud-based service for rapid roll-out and easy accessibility. You can set up one-off or recurrent scans and receive customised alerts and reports at the end of each scan.

All reports can be personalised with dozens of filters available such as status, common name, brand, issuer, key algorithm, hash algorithm, security issue, etc.

Any certificate discovered can be renewed automatically with the server configuration of your choice and optional custom scripts. This also includes automate renewal of certificates which were not issued by Symantec.

Symantec handles all the back-end processes and operations necessary to maintain the service and ensure availability. This model features three main components: a console, sensors, and agents.

## **Key benefits**

### **Visibility**

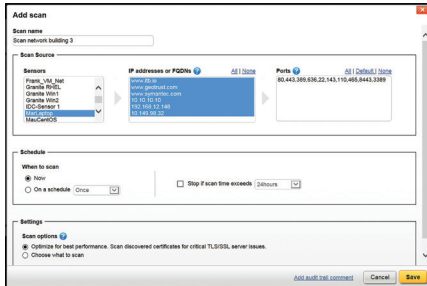
- Simplifies your ability to catalog and assess the compliance and security of all your SSL/TLS certificates across your environment regardless of certificate vendor.
- Simplifies certificate tracking and auditing.

### **Agility with control**

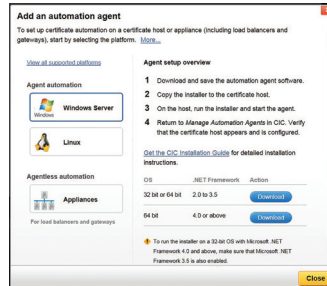
- Simplifies certificate forecasting and budgeting.
- Frees up time spent managing certificates for more business strategic initiatives.
- Reduces personnel expertise and training requirements for certificate installations.
- Flexibly controls automated renewals and transfers.

### **Security**

- Helps eliminate unexpected certificate expirations.
- Eliminates certificate and configuration vulnerabilities caused by human error.



Scan setup

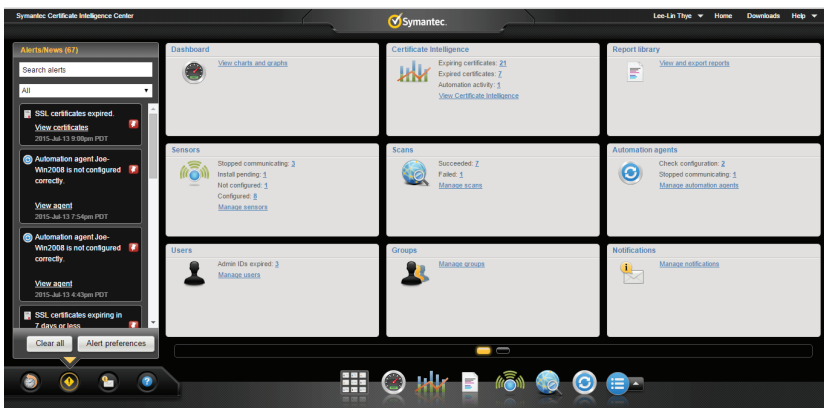


Automation agent setup

**The console**



Hosted and delivered from Symantec’s cloud infrastructure, the console contains configuration, user management, permissions, and other information required to use the Discovery and Automation services. The console is accessible using the most popular browsers, including Internet Explorer and Firefox.



Easy-to-use dashboard provides administrators a quick access to perform SSL/TLS certificate discovery, monitoring and renewal automation

**Full control of your SSL/TLS portfolio in 3 features**

**1. Discovery**

- Fully configurable scanning using high-performance sensors
- Listing of all SSL/TLS certificates in internal and external networks, regardless of any CA and including self-signed certificates
- TLS security and vulnerability ratings and recommendations based on industry guidelines

**2. Monitoring**

- Large selection of templates for executive and operational reporting
- Configurable notifications and in-console alerts
- Detailed reports and audit trails for accountability and compliance verification

**3. Automation**

- Automated lifecycle management including SSL/TLS certificate installation and renewal that respects industry guidelines
- Agent and agentless deployment options for load balancers
- Support for major servers and load balancer platforms including Apache, Microsoft®, F5®, A10 AX and Thunder Series ADC, and Citrix® IBM Datapower. New platforms being added frequently

### The sensors



The architecture includes distributed, on-premise sensors for scanning. Sensors are installed at strategic points on the enterprise network and perform actions based on console instructions from an administrator. The primary role of sensors is to scan the network for SSL/TLS certificates and report details on the certificates found, but they can also be used for “agentless” automation deployments (see more below).

Symantec Discovery and Automation supports the use of multiple distributed sensors to report on multiple network segments. They can also be installed on any external network to scan public domains and IP addresses.

### The agents



Software agents must be installed on supported web servers to enable automated certificate renewal. However, agents are not required for automated certificate renewal on supported load balancers - in this case, sensors can be used to perform “agentless” automation via remote API calls.

## Complete Website Security:

Backed by one of the global leaders in cyber security, Symantec Complete Website Security harmonizes and fortifies your website security with visibility, agility, and best-in-class security to protect your business, brand, and customers with confidence.

## Contact us:

**For product information in the UK, call:**

0800 032 2101 or +44 (0) 203 788 7741

**Symantec (UK) Limited.**

350 Brook Drive,

Green Park, Reading,

Berkshire, RG2 6UH, UK.

[www.symantec.com/en/uk/complete-website-security](http://www.symantec.com/en/uk/complete-website-security)

**For product information in Europe, call:**

+353 1 793 9053 or +41 (0) 26 429 7929

**For product information in the US, call:**

1-866-893-6565

**Symantec World Headquarters**

350 Ellis Street

Mountain View, CA 94043 USA

1-866-893-6565

[www.symantec.com/complete-website-security](http://www.symantec.com/complete-website-security)

**For product information in Asia Pacific, call:**

**Australia:** +61 3 9674 5500

**New Zealand:** +64 9 9127 201

**Singapore:** +65 6622 1638

**Hong Kong:** +852 30 114 683

**Symantec Website Security Solutions Pty Ltd**

3/437 St Kilda Road, Melbourne,

3004, ABN: 88 088 021 603

[www.symantec.com/en/aa/complete-website-security](http://www.symantec.com/en/aa/complete-website-security)

Copyright © 2017 Symantec Corporation. All rights reserved. Symantec, the Symantec Logo, the Checkmark Circle Logo and the Norton Secured Logo are trademarks or registered trademarks of Symantec Corporation or its affiliates in the U.S. and other countries. Other names may be trademarks of their respective owners.